

Peru



Transport is the largest CO₂ emitter in **Peru**, contributing 43% of the total emissions in the country. Transport CO₂ emissions increased nearly 13% from 2015 to 2021. In 2021, the country recorded per capita transport CO₂ emissions below the regional average, at 0.71 tons. Biofuels represented 4% of Peru's transport energy consumption in 2020. There is a general scarcity of statistical data about passenger and freight travel activity.

Since the last edition of Peru's transport fact sheet, and with support from international organizations, the country moved forward with the implementation of its National Urban Transport Policy and the development of Sustainable Urban Mobility Plans in several cities. The country also announced plans to improve the country's connectivity by expanding the rail network.

Income group	Middle-income	
Human Development Index (2021)	0.762	
Population size (2022)	33 911 712	+11.1% (2015 - 2022)
Urban population share (2022)	79%	+10.4% (2015 - 2022)
GDP per capita (2021)	6 474.79	+4.1% (2015 - 2021)

Transport Demand Trends

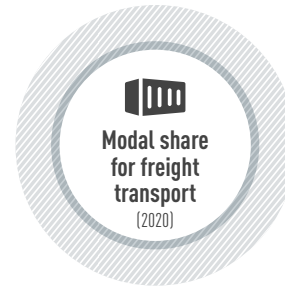
Passenger travel activity

Not available



Freight transport activity

Not available



Energy consumption (2020)

7.04

million tonnes of oil equivalent

+5.6%
(2015 to 2020)

Average light duty fuel economy consumption Lge/100 km (WLTP)

(n/a)

88.8%

Oil Products

7%

Natural Gas

4.1%

Biofuels

0.1%

Electricity

Transport Emission Trends

Transport CO₂ emissions (2021)

23.9 million tonnes

+13%
(2015 to 2021)

Per capita transport CO₂ emissions (2021)

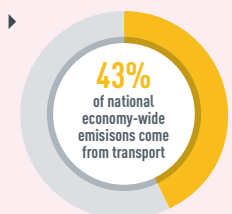
0.71 tonnes

Per capita transport CO₂ emissions

Global average Income group average Regional average Peru average



Transport is the largest CO₂ producing sector in the country



Transport Decarbonisation Pathways

Transport strategy identifies climate change	✓
Long-term strategy submitted to UNFCCC	✗
NDC submitted:	1st and Updated NDC
NDC highlights transport for GHG mitigation	✗
Transport mitigation targets in NDC	✗
Other non-emission related transport targets in NDC	✗
VNR highlights transport	✓ 2020 VNR with transport linkages to SDG 3, SDG 4, SDG 8, SDG 9, SDG 11 and SDG 13

Transport actions in VNRs

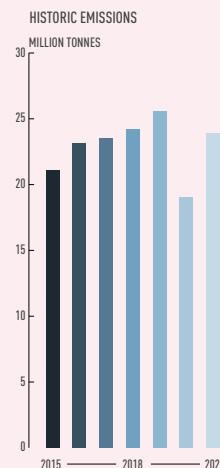
- Promote electric mobility
- Develop cycling infrastructure
- Road infrastructure expansion

Transport actions in NDC

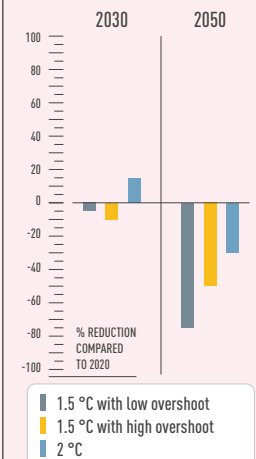
Mitigation ▶ Not available

Adaptation ▶ Not available

Required regional transport decarbonisation pathways



IPCC transport decarbonisation pathways for this region





Policy Areas: Indicators and Targets

Integrated Transport Planning	
National urban mobility framework (2022)	✓
Sustainable urban mobility plans (2022)	✓
Number of sustainable urban mobility plans (2022)	5 cities
Low emission zones (2022)	Not available

Walking	
National walking strategies (2022)	Not available

Cycling	
National walking strategies (2022)	✓
Targets ▶ To promote the safe use of the bicycle	
Cycling infrastructure in capital (2022)	294 km

Shared Mobility, Public Transport and Informal Transport	
Bus rapid transit (2022)	26 km in 1 city
Bus rapid transit daily passenger volume (2022)	704 803
Urban rail (LRT, metro, tram) (2022)	34 km in 1 city
Rapid Transit to Resident Ratio (2021)	3.9

Intercity Rail	
Rail network (1998)	1639 km
Rail travel activity (1998)	127 million-passenger-km
Rail freight activity (1998)	599 million ton-km
High-speed rail (2021)	Not available
High-speed rail travel activity (2021)	Not available
National plans for passenger and freight rail expansion (2022)	✓
Target ▶ By 2030, connect the country with 4 railway lines	

Road Transport	
Total road vehicles in use per 1,000 people (2020)	88.4
Average annual growth rate (from 2015 to 2020)	3.80%

Aviation	
Air passengers carried (2020)	5.7 million people
Air freight activity (2020):	96.5 million ton-km
Carbon-accredited airports (2022)	3 airports
of which carbon neutral:	2 airports

Shipping	
Liner shipping connectivity index (2021):	40.4
Container port traffic (2020):	2 601 411 TEU

Transport Energy Sources	
Biofuel blend mandate (2022)	5% Biodiesel, 78% Ethanol
Renewable energy (biofuels and electricity) share in transport (2020)	4.30%
Targeted % of renewable energy	5% biodiesel by 2024

Vehicle Technologies	
Emission standards for LDVs (2020)	Euro 6
CO ₂ emissions performance for passenger cars (2020)	Not available
Targeted CO ₂ emissions performance	Not available
Regulatory environment ranking on used vehicles by UNEP (2021)	Good
Electric vehicles (2022)	Not available
Share of electric vehicles in car sales (2022)	Not available
ICE phase-out targets:	✗

COVID-19	
Strongest impact of COVID-19 on...	(compared to pre-COVID-19 baseline)
... trips to public transport	-87.40% Week of 12 April 2020
... navigation request for walking	Not available
... navigation request for driving	Not available
... driven kilometres	Not available
Traditional transport infrastructure investment:	USD 6.95 billion
Clean transport infrastructure investment:	USD 0.001 billion
Examples ▶ Road maintenance ▶ Sanitation and road infrastructure projects ▶ Infrastructure funding to native communities ▶ Funds for bicycle lanes	

This fact sheet is part of the SLOCAT Transport, Climate and Sustainability Global Status Report 3rd Edition. Information shown in this country fact sheet is based on desk research and might not be complete or not show the most recent status. The data has been collected to the best knowledge and availability. If no information was able to be retrieved, then 'Not available' is being indicated. The content does not represent the opinion of the SLOCAT Partnership on Sustainable, Low Carbon Transport. For more information, please visit tcc-gsr.com

- List of acronyms**
- GDP: Gross-domestic product
 - HDV: Heavy-duty vehicle
 - ICE: Internal combustion engine
 - LDV: Light-duty vehicle
 - LRT: Light-rail transit
 - NDC: Nationally determined contribution
 - TEU: Twenty-foot Equivalent Unit
 - UNEP: United Nations Environment Programme
 - UNFCCC: United Nations Framework Convention on Climate Change
 - VNR: Voluntary national review of the Sustainable Development Goals
 - WLTP: Worldwide harmonised light vehicles test procedure