

Nigeria



Nigeria has the highest population and the highest GDP in Africa. Transport is the country's largest CO₂ emitter, accounting for 47% of the national economy-wide emissions, and there has been a 32.6% increase in transport emissions between 2015 and 2021. Nigeria's urban population share has also increased significantly between 2015 and 2022 implying a higher demand and urgency for sustainable urban mobility solutions.

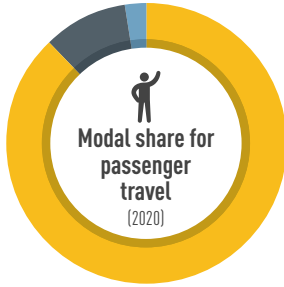
These trends spur the demand for private vehicles as Nigeria is currently the second largest importer of used light duty vehicles in Africa with low vehicle emission standards. Since the previous edition of Nigeria's transport factsheet, there have been milestones such as submission of the long-term strategy to the UNFCCC, and the updated NDC document. Nigeria introduced a railways act to boost trade.

Income group	Middle-income
Human Development Index (2021)	0.535
Population size (2022)	215 928 431 +18.8% (2015 - 2022)
Urban population share (2022)	53.7% +33.9% (2015 - 2022)
GDP per capita (2021)	2 427.67 -9.39% (2015 - 2021)

Transport Demand Trends

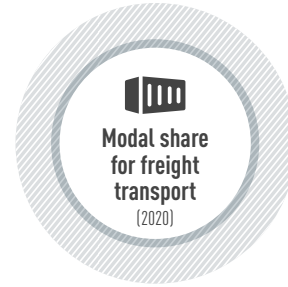
Passenger travel activity

Not available



Freight transport activity

Not available



Energy consumption (2020)

17.3 million tonnes of oil equivalent

+13.8% (2015 to 2020)

Average light duty fuel economy consumption Lge/100 km (WLTP) (n/a)

100% Oil Products

Transport Emission Trends

Transport CO₂ emissions (2021)

59.3 million tonnes

+32.6% (2015 to 2020)

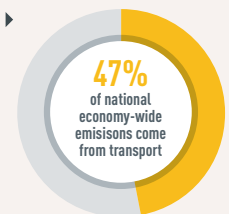
Per capita transport CO₂ emissions (2021)

0.28 tonnes

Per capita transport CO₂ emissions



Transport is the largest CO₂ producing sector in the country



Transport Decarbonisation Pathways

Transport strategy identifies climate change	✓
Long-term strategy submitted to UNFCCC	✓
NDC submitted:	1st and Updated NDC
NDC highlights transport for GHG mitigation	✓
Transport mitigation targets in NDC	✗
Other non-emission related transport targets in NDC	<ul style="list-style-type: none"> ▶ 100,000 extra buses to be introduced by 2030 ▶ Bus Rapid Transport will account for 22.1% of passenger-km by 2035 ▶ 25 % of trucks and buses using CNG by 2030
VNR highlights transport	✓

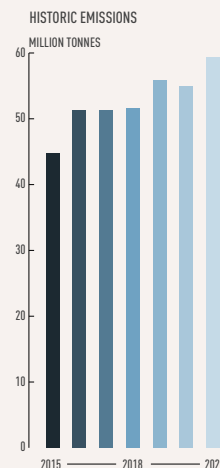
Transport actions in VNRs

- ▶ Improve access to schools
- ▶ Rural road development

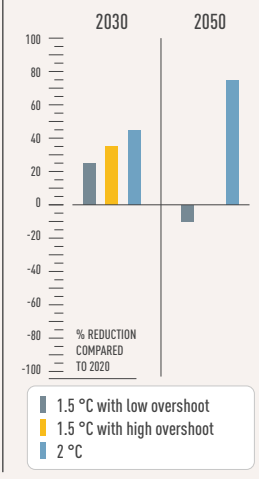
Transport actions in NDC

- Mitigation**
 - ▶ Bus Rapid Transport
 - ▶ LPG/CNG/LNG
 - ▶ Vehicle air pollution emission standards
- Adaptation**
 - ▶ Not available

Required regional transport decarbonisation pathways



IPCC transport decarbonisation pathways for this region



Policy Areas: Indicators and Targets

Integrated Transport Planning

National urban mobility framework (2022)	✘
Sustainable urban mobility plans (2022)	Not available
Number of sustainable urban mobility plans (2022)	Not available
Low emission zones (2022)	Not available

Walking

National walking strategies (2022)	Only combined with cycling
Targets	<ul style="list-style-type: none"> ▶ Increase mode share of walking, cycling and public transport ▶ Reduce of use of personal motor vehicles ▶ Improve road safety ▶ Improve air quality

Cycling

National walking strategies (2022)	Only combined with walking
Targets	<ul style="list-style-type: none"> ▶ Same as above for walking
Cycling infrastructure in capital (2022)	Not available

Shared Mobility, Public Transport and Informal Transport

Bus rapid transit (2022)	20 km in 1 city
Bus rapid transit daily passenger volume (2022)	200 000
Urban rail (LRT, metro, tram) (2022)	27 km in 1 city
Rapid Transit to Resident Ratio (2021)	0.8

Intercity Rail

Rail network (2015)	3528 km
Rail travel activity (2005)	173.63 million-passenger-km
Rail freight activity (2005)	79.26 million ton-km
High-speed rail (2021)	Not available
High-speed rail travel activity (2021)	Not available
National plans for passenger and freight rail expansion (2022)	✔
Target	<ul style="list-style-type: none"> ▶ To boost intra-African trade as envisaged by the African Continental Free Trade Area (AfCTA)

Road Transport

Total road vehicles in use per 1,000 people (2020)	55.7
Average annual growth rate (from 2015 to 2020)	5%

Aviation

Air passengers carried (2020)	3.4 million people
Air freight activity (2020):	0.7 million ton-km
Carbon-accredited airports (2022)	1 airport
of which carbon neutral:	✘

Shipping

Liner shipping connectivity index (2021):	20.8
Container port traffic (2020):	15 28 520 TEU

Transport Energy Sources

Biofuel blend mandate (2022)	20% Biodiesel, 10% Ethanol
Renewable energy (biofuels and electricity) share in transport (2020)	Not available
Targeted % of renewable energy	Not available

Vehicle Technologies

Emission standards for LDVs (2020)	Euro 2
CO ₂ emissions performance for passenger cars (2020)	Not available
Targeted CO ₂ emissions performance	Not available
Regulatory environment ranking on used vehicles by UNEP (2021)	Good
Electric vehicles (2022)	Not available
Share of electric vehicles in car sales (2022)	Not available
ICE phase-out targets:	100% transition to EV by 2060 with interim targets of 1% EV and 2% HEV by 2030, and 60% EV and 20% HEV by 2050.

COVID-19

Strongest impact of COVID-19 on...	(compared to pre-COVID-19 baseline)
... trips to public transport	-55% Week of 19 April 2020
... navigation request for walking	Not available
... navigation request for driving	Not available
... driven kilometres	Not available
Traditional transport infrastructure investment:	USD 0.154 billion
Clean transport infrastructure investment:	Not available

Examples

- ▶ Road Construction and Rehabilitation

This fact sheet is part of the SLOCAT Transport, Climate and Sustainability Global Status Report 3rd Edition. Information shown in this country fact sheet is based on desk research and might not be complete or not show the most recent status. The data has been collected to the best knowledge and availability. If no information was able to be retrieved, then 'Not available' is being indicated. The content does not represent the opinion of the SLOCAT Partnership on Sustainable, Low Carbon Transport. For more information, please visit tcc-gsr.com

Data in this fact sheet is based on the Energy and Transport Starter Data Kits by the Climate Compatible Growth (CCG) programme. SLOCAT is contributing transport data to the Energy and Transport Starter Data Kits synthesising available data on passenger and freight activity, energy intensity, load factors and vehicle fleets for Africa, Asia and Latin America. For more information, please visit climatecompatiblegrowth.com/starter-kits/.

List of acronyms

GDP	Gross-domestic product	TEU	Twenty-foot Equivalent Unit
HDV	Heavy-duty vehicle	UNEP	United Nations Environment Programme
ICE	Internal combustion engine	UNFCCC	United Nations Framework Convention on Climate Change
LDV	Light-duty vehicle	VNR	Voluntary national review of the Sustainable Development Goals
LRT	Light-rail transit	WLTP	Worldwide harmonised light vehicles test procedure
NDC	Nationally determined contribution		