

New Zealand



TRANSPORT, CLIMATE
AND SUSTAINABILITY
GLOBAL STATUS REPORT



New Zealand's transport CO₂ emissions increased by 12.4% from 2015 to 2019, due to constant increases in passenger and freight activity. As of 2021, transport continues to be the largest CO₂-emitting sector in the country.

The previous edition pointed to the newly released long-term vision of becoming carbon-neutral by 2050. This ambition was translated to transport, resulting in strategies to promote walking and cycling, improve rail services and support the transition to electric vehicles.

Income group: high-income	
Human Development Index (2021): 0.937	
Population size (2022): 5 163 684	+13.4% (2015 - 2022)
Urban population share (2022): 82.7%	+7.2% (2015 - 2022)
GDP per capita (2021): 40 993.66	+4.8% (2015 - 2021)

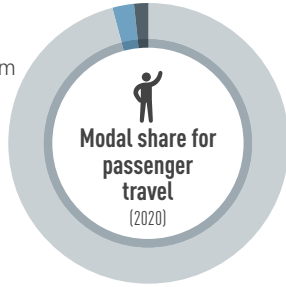
Transport Demand Trends

Passenger travel activity

55 432

million passenger-km
in 2020

+15%
(2017 to 2020)

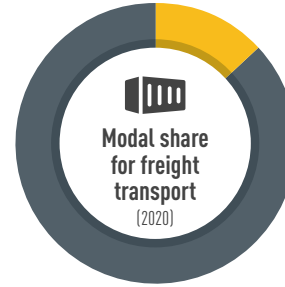


Freight transport activity

55 432

million ton-km
in 2020

+12.2%
(2015 to 2020)



Energy consumption (2020)

4.62

million tonnes of oil equivalent

-4.2%
(2015 to 2020)

Average light duty fuel economy consumption Lge/100 km (WLTP) (n/a)

99.8%

Oil products

0.2%

Electricity

Transport Emission Trends

Transport CO₂ emissions (2021)

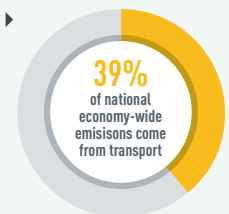
12.6 million tonnes

+12.2%
(2015 to 2021)

Per capita transport CO₂ emissions (2021)

2.48 tonnes

Transport is the **largest** CO₂ producing sector in the country



Per capita transport CO₂ emissions



Transport Decarbonisation Pathways

Transport strategy identifies climate change	✓
Long-term strategy submitted to UNFCCC	✓
NDC submitted:	1st and Updated NDC
NDC highlights transport for GHG mitigation	✓
Transport mitigation targets in NDC	✗
Other non-emission related transport targets in NDC	✗
VNR highlights transport	✓ 2019 VNR with transport linkages to SDG 3, SDG 7, SDG 8, SDG 11 and SDG 13

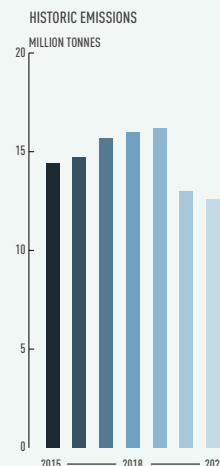
Transport actions in VNRs

- ▶ Active transport promotion
- ▶ Road safety improvements
- ▶ Electric vehicles
- ▶ Renewable energy and hydrogen uptake in transport
- ▶ Road freight employment
- ▶ Public transport promotion

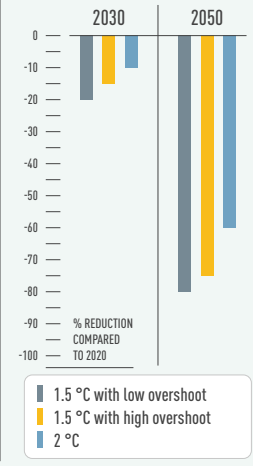
Transport actions in NDC

- Mitigation**
 - ▶ EV purchase incentives
 - ▶ Vehicle restrictions (import, age, access, sale, taxation)
 - ▶ Vehicle taxes
- Adaptation**
 - ▶ Not available

Required regional transport decarbonisation pathways



IPCC transport decarbonisation pathways for this region



Policy Areas: Indicators and Targets

Integrated Transport Planning	
National urban mobility framework (2022)	✓
Sustainable urban mobility plans (2022)	✓
Number of sustainable urban mobility plans (2022)	5 cities
Low emission zones (2022)	Not available

Walking	
National walking strategies (2022)	Only summarised as walking and cycling strategy in national plan
Targets	
▶ NZD 1 billion in walking and cycling improvements	

Cycling	
National walking strategies (2022)	Only summarised as walking and cycling strategy in national plan
Targets	
▶ NZD 1 billion in walking and cycling improvements	
Cycling infrastructure in capital (2022)	23 km of bikelanes

Shared Mobility, Public Transport and Informal Transport	
Bus rapid transit (2022)	6 km in 1 city
Bus rapid transit daily passenger volume (2022)	22 900
Urban rail (LRT, metro, tram) (2022)	192 km in 2 cities
Rapid Transit to Resident Ratio (2021)	3.9

Intercity Rail	
Rail network (1998)	3 908 km
Rail travel activity (2020)	802 million-passenger-km
Rail freight activity (2021)	4 444 million ton-km
High-speed rail (2021)	Not available
High-speed rail travel activity (2021)	Not available
National plans for passenger and freight rail expansion (2022)	✓
Target	
▶ Establishing a new long-term planning and funding framework	
▶ Develop a resilient and reliable rail network	

Road Transport	
Total road vehicles in use per 1,000 people (2020)	869.2
Average annual growth rate (from 2015 to 2020)	3.50%

Aviation	
Air passengers carried (2020)	8.5 million people
Air freight activity (2020):	774 million ton-km
Carbon-accredited airports (2022)	4 airports
of which carbon neutral:	1 airport

Shipping	
Liner shipping connectivity index (2021):	30.5
Container port traffic (2020):	3 174 304 TEU

Transport Energy Sources	
Biofuel blend mandate (2022)	7% Biodiesel
Renewable energy (biofuels and electricity) share in transport (2020)	0.20%
Targeted % of renewable energy	30% of biofuels by 2050

Vehicle Technologies	
Emission standards for LDVs (2020)	Euro 4
CO ₂ emissions performance for passenger cars (2021)	158.8 gCO ₂ /km
Targeted CO ₂ emissions performance	62.7 gCO ₂ /km by 2027
Regulatory environment ranking on used vehicles by UNEP (2021)	Good
Electric vehicles (2022)	46 000
Share of electric vehicles in car sales (2022)	13.0%
ICE phase-out targets:	✗

COVID-19	
Strongest impact of COVID-19 on...	(compared to pre-COVID-19 baseline)
... trips to public transport	-86.30% Week of 19 April 2020
... navigation request for walking	-78.40% Week of 19 April 2020
... navigation request for driving	-85% Week of 12 April 2020
... driven kilometres	Not available
Traditional transport infrastructure investment:	Not available
Clean transport infrastructure investment:	Not available

This fact sheet is part of the SLOCAT Transport, Climate and Sustainability Global Status Report 3rd Edition. Information shown in this country fact sheet is based on desk research and might not be complete or not show the most recent status. The data has been collected to the best knowledge and availability. If no information was able to be retrieved, then 'Not available' is being indicated. The content does not represent the opinion of the SLOCAT Partnership on Sustainable, Low Carbon Transport. For more information, please visit tcc-gsr.com

List of acronyms	
GDP	Gross-domestic product
HDV	Heavy-duty vehicle
ICE	Internal combustion engine
LDV	Light-duty vehicle
LRT	Light-rail transit
NDC	Nationally determined contribution
TEU	Twenty-foot Equivalent Unit
UNEP	United Nations Environment Programme
UNFCCC	United Nations Framework Convention on Climate Change
VNR	Voluntary national review of the Sustainable Development Goals
WLTP	Worldwide harmonised light vehicles test procedure