

Ghana



Transport is the largest CO₂ emitting sector in **Ghana**, contributing 38% of the total CO₂ emissions. There was a 14% increase in transport CO₂ emissions between 2015 and 2021. Although vehicle emission standards were adopted, Ghana is still one of the leading importers of used vehicles and there was an exponential increase of 10,000 units of imports between 2019 and 2020. There is also a lack of data on passenger and freight activity,

making it difficult to attribute the major growth area of transport emissions.

In 2020, the country released an updated National Transport Policy which prioritises sustainable transportation and climate change. The country's Railway Transport Masterplan was also updated in 2020 to provide for expansion of the rail network.

Income group	Middle-income
Human Development Index (2021)	0.632
Population size (2022)	33 154 506 +16.2% (2015 - 2022)
Urban population share (2022)	56.6% +25.8% (2015 - 2022)
GDP per capita (2021)	2034.66 +17.5% (2015 - 2021)

Transport Demand Trends

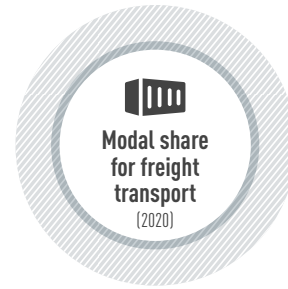
Passenger travel activity

Not available



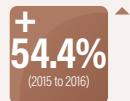
Freight transport activity

Not available



Energy consumption (2020)

0.004059 million tonnes of oil equivalent



Average light duty fuel economy consumption Lge/100 km (WLTP) (n/a)

75.4% Oil Products

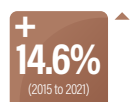
24.6% Electricity



Transport Emission Trends

Transport CO₂ emissions (2021)

9.1 million tonnes



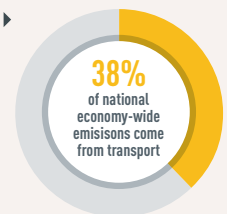
Per capita transport CO₂ emissions (2021)

0.28 tonnes

Per capita transport CO₂ emissions



Transport is the **largest** CO₂ producing sector in the country



Transport Decarbonisation Pathways

Transport strategy identifies climate change	✓
Long-term strategy submitted to UNFCCC	✗
NDC submitted:	1st and Updated NDC
NDC highlights transport for GHG mitigation	✓
Transport mitigation targets in NDC	✗
Other non-emission related transport targets in NDC	✗
VNR highlights transport	✓ 2022 VNR with transport linkages to SDG 1, SDG 9 and SDG 13

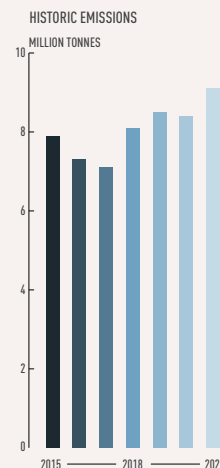
Transport actions in VNRs

▶ Not available but references to transport actions in NDCs made

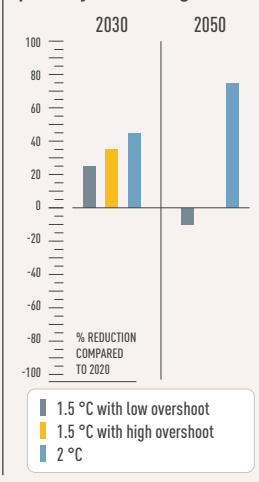
Transport actions in NDC

- Mitigation ▶ Expansion of infrastructure
- Adaptation ▶ Transport Planning

Required regional transport decarbonisation pathways



IPCC transport decarbonisation pathways for this region



Policy Areas: Indicators and Targets

Integrated Transport Planning	
National urban mobility framework (2022)	Not available
Sustainable urban mobility plans (2022)	✓
Number of sustainable urban mobility plans (2022)	1 city (Kumasi, ongoing in 2023)
Low emission zones (2022)	Not available

Walking	
National walking strategies (2022)	Only combined with cycling in National Transport Policy
Targets <ul style="list-style-type: none"> Integrate walking and cycling facilities in all transport infrastructure developments Maintain and free-up all existing NMT facilities from encroachment. 	

Cycling	
National walking strategies (2022)	Only combined with walking in National Transport Policy
Targets <ul style="list-style-type: none"> Integrate walking and cycling facilities in all transport infrastructure developments Maintain and free-up all existing NMT facilities from encroachment. 	
Cycling infrastructure in capital (2022)	Not available

Shared Mobility, Public Transport and Informal Transport	
Bus rapid transit (2022)	✗
Bus rapid transit daily passenger volume (2022)	
Urban rail (LRT, metro, tram) (2022)	Not available
Rapid Transit to Resident Ratio (2021)	Not available

Intercity Rail	
Rail network (2016)	953 km
Rail travel activity (2008)	85 million-passenger-km
Rail freight activity (2010)	181 million ton-km
High-speed rail (2021)	Not available
High-speed rail travel activity (2021)	Not available
National plans for passenger and freight rail expansion (2022)	✓
Target <ul style="list-style-type: none"> To expand rail network to create an efficient transportation system linking important mineral potentials, communities and every regional capital 	

Road Transport	
Total road vehicles in use per 1,000 people (2020)	Not available
Average annual growth rate (from 2015 to 2020)	Not available

Aviation	
Air passengers carried (2020)	0.3 million people
Air freight activity (2020):	0.0 million ton-km
Carbon-accredited airports (2022)	✗
of which carbon neutral:	✗

Shipping	
Liner shipping connectivity index (2021):	372
Container port traffic (2020):	1 050 696 TEU

Transport Energy Sources	
Biofuel blend mandate (2022)	Not available
Renewable energy (biofuels and electricity) share in transport (2020)	24.64%
Targeted % of renewable energy	Not available

Vehicle Technologies	
Emission standards for LDVs (2020)	Euro 2
CO ₂ emissions performance for passenger cars (2020)	Not available
Targeted CO ₂ emissions performance	Not available
Regulatory environment ranking on used vehicles by UNEP (2021)	Good
Electric vehicles (2022)	Not available
Share of electric vehicles in car sales (2022)	Not available
ICE phase-out targets:	4%, 16%, and 32% of cars and buses sold to be EVs in 2025, 2030, and 2050 respectively

COVID-19	
Strongest impact of COVID-19 on...	(compared to pre-COVID-19 baseline)
... trips to public transport	-58.4% Week of 5 April 2020
... navigation request for walking	Not available
... navigation request for driving	Not available
... driven kilometres	Not available
Traditional transport infrastructure investment:	USD 1.3
Clean transport infrastructure investment:	Not available
Examples <ul style="list-style-type: none"> Road and Bridge Construction Programme 	

This fact sheet is part of the SLOCAT Transport, Climate and Sustainability Global Status Report 3rd Edition. Information shown in this country fact sheet is based on desk research and might not be complete or not show the most recent status. The data has been collected to the best knowledge and availability. If no information was able to be retrieved, then 'Not available' is being indicated. The content does not represent the opinion of the SLOCAT Partnership on Sustainable, Low Carbon Transport. For more information, please visit tcc-gsr.com

Data in this fact sheet is based on the Energy and Transport Starter Data Kits by the Climate Compatible Growth (CCG) programme. SLOCAT is contributing transport data to the Energy and Transport Starter Data Kits: synthesising available data on passenger and freight activity, energy intensity, load factors and vehicle fleets for Africa, Asia and Latin America. For more information, please visit climatecompatiblegrowth.com/starter-kits/.

List of acronyms

GDP	Gross-domestic product	TEU	Twenty-foot Equivalent Unit
HDV	Heavy-duty vehicle	UNEP	United Nations Environment Programme
ICE	Internal combustion engine	UNFCCC	United Nations Framework Convention on Climate Change
LDV	Light-duty vehicle	VNR	Voluntary national review of the Sustainable Development Goals
LRT	Light-rail transit	WLTP	Worldwide harmonised light vehicles test procedure
NDC	Nationally determined contribution		