

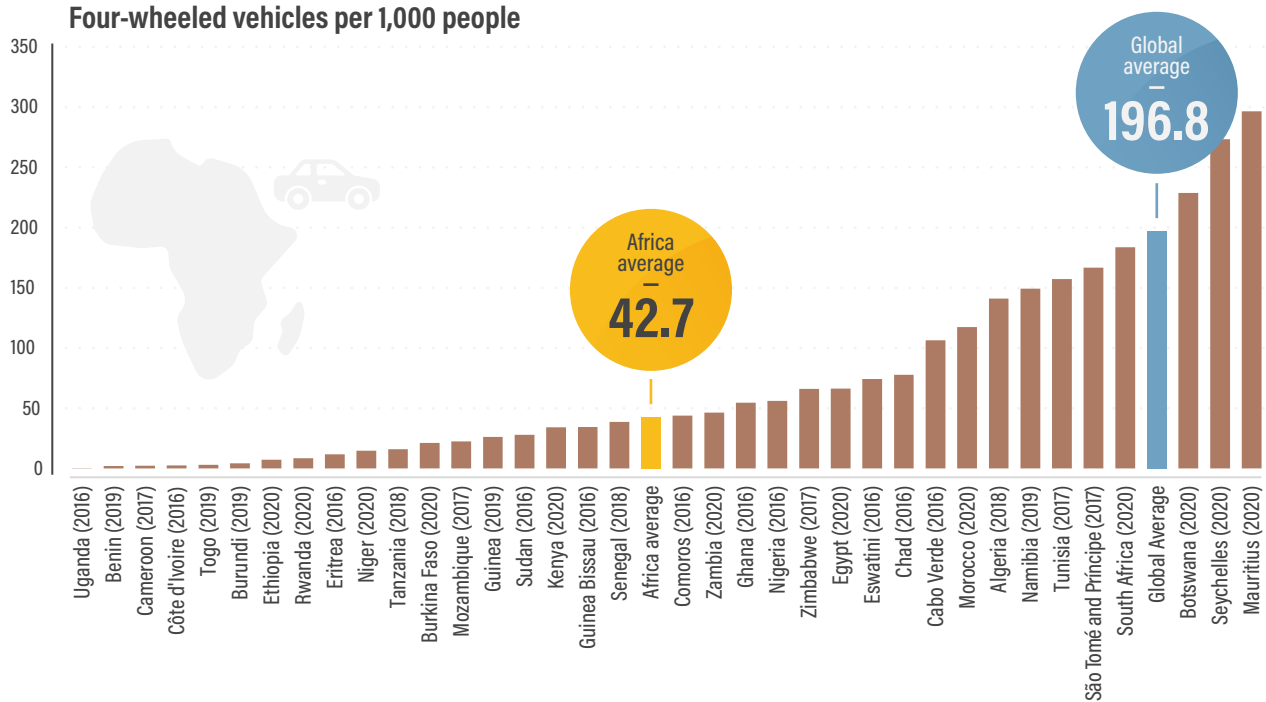


## **Module 2**

# Regional Trends in Transport Demand and Emissions, and Policy Developments

**FIGURE 1.**

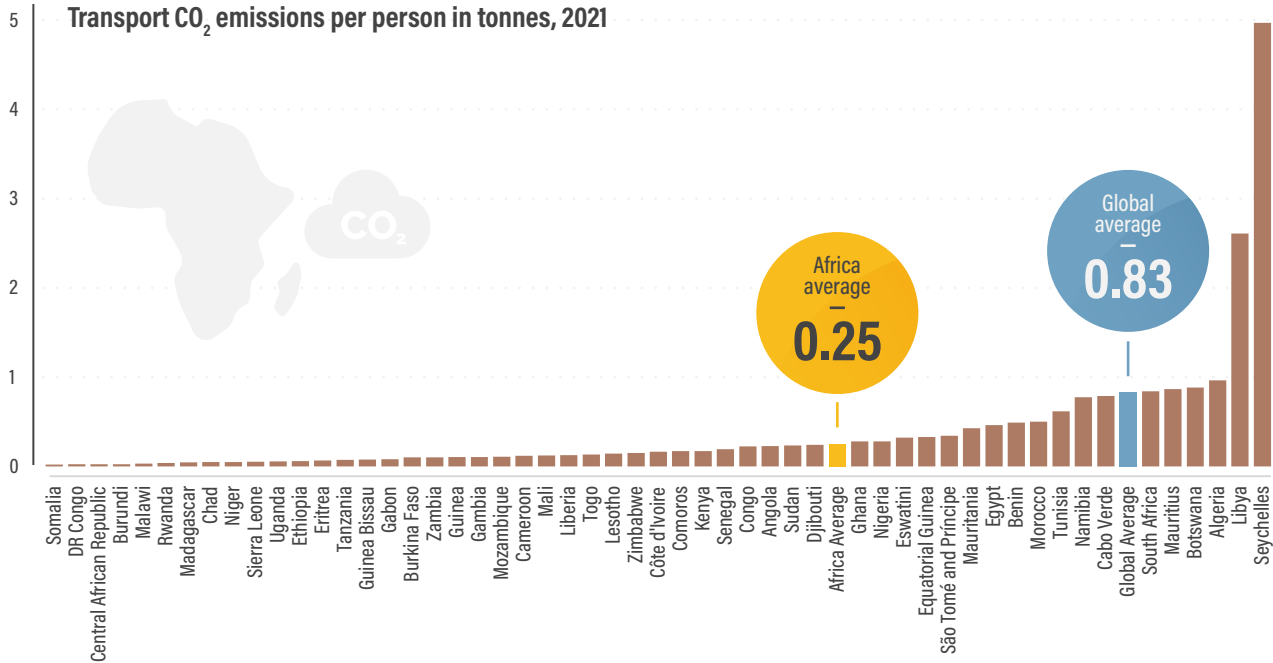
**Motorisation rates per 1,000 people in Africa, 2016-2020**



Source: See endnote 9 for this section.

**FIGURE 2.**

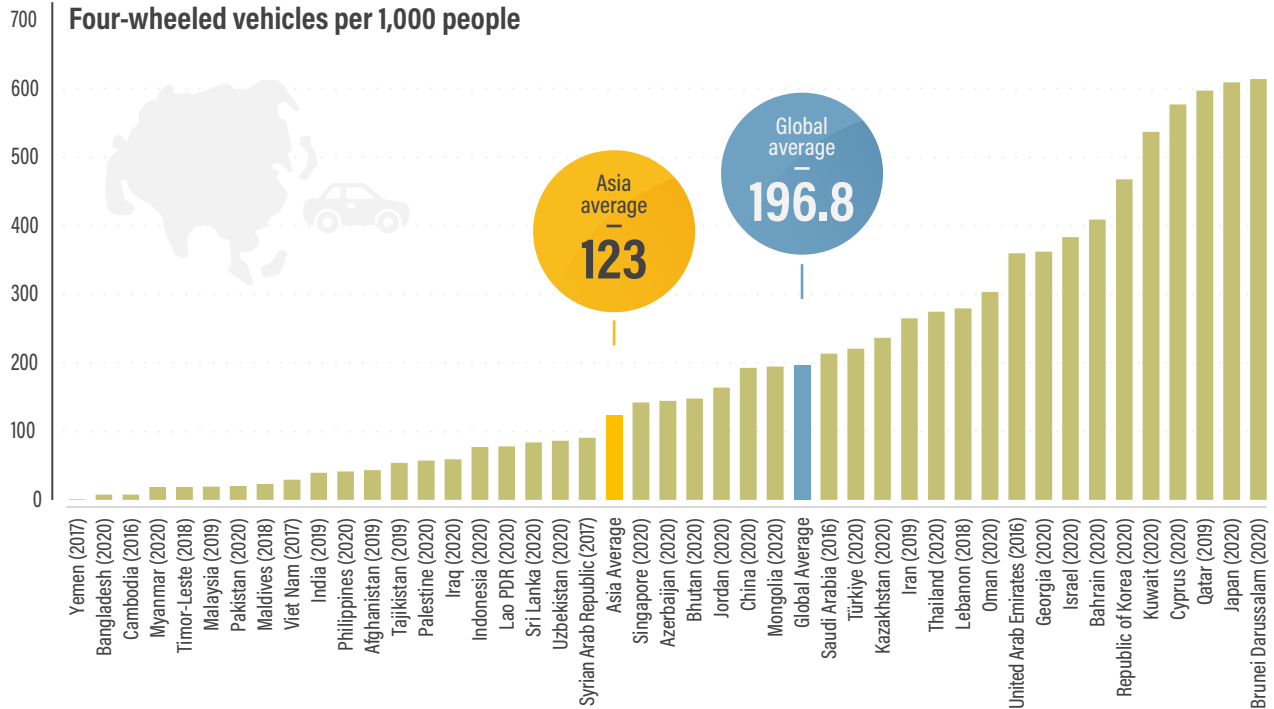
**Per capita transport CO<sub>2</sub> emissions in Africa, 2021**



Source: See endnote 88 for this section.

**FIGURE 1.**

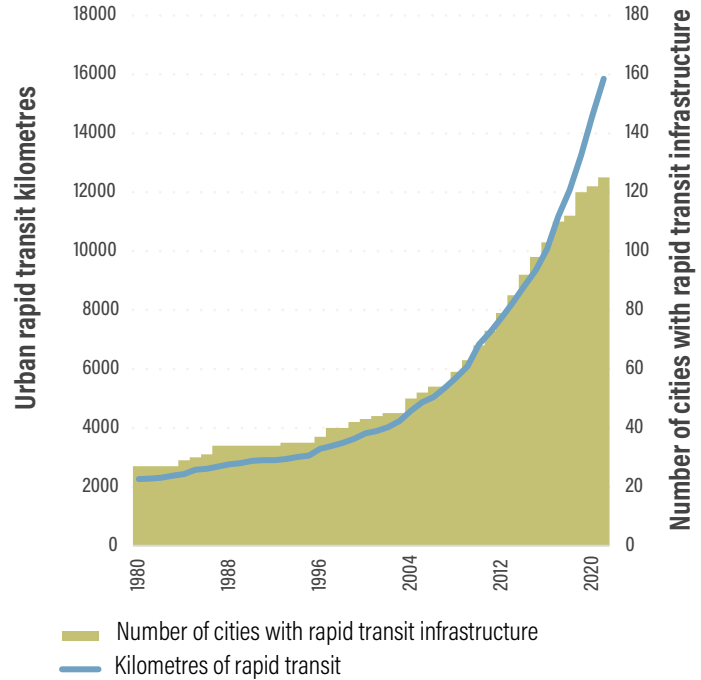
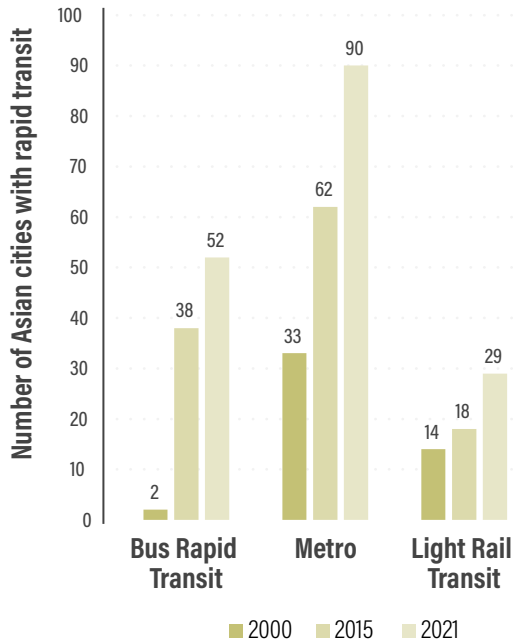
**Motorisation levels per 1,000 people in Asia, 2016-2020**



Source: See endnote 16 for this section.

**FIGURE 2.**

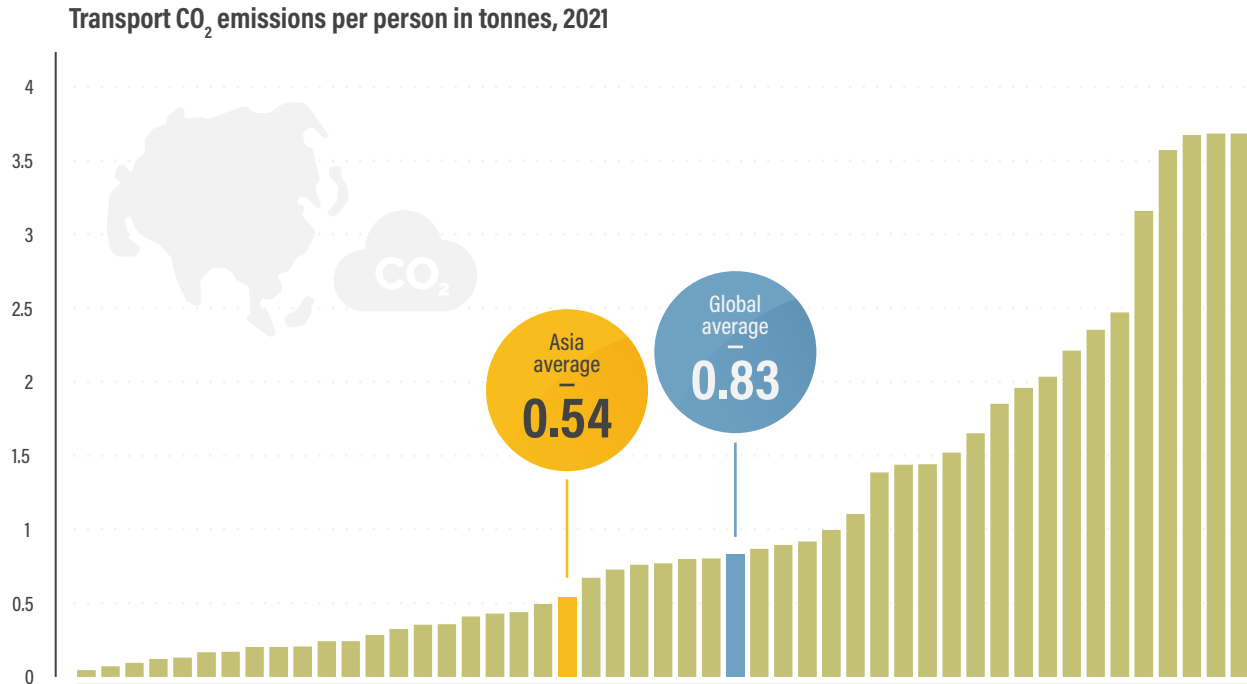
Urban transport trends in Asia, 2000, 2015 and 2021



Source: ADB. See endnote 28 for this section.

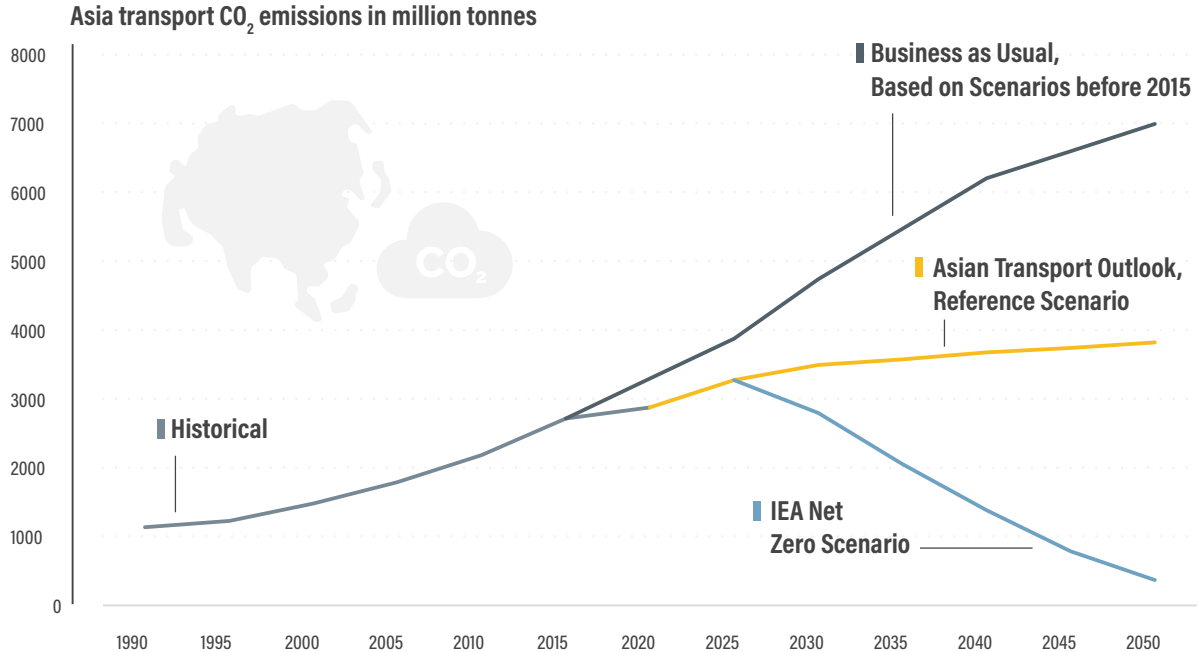
**FIGURE 3.** Per capita transport CO<sub>2</sub> emissions in Asia, by country, 2021

Source: See endnote 76 for this section.



**FIGURE 4.** CO<sub>2</sub> emissions from transport in Asia, 1990-2050

Source: ADB. See endnote 87 for this section.



**FIGURE 1.**

**Motorisation rates per 1,000 people in Europe, 2016-2020**

Source: See endnote XX for this section.

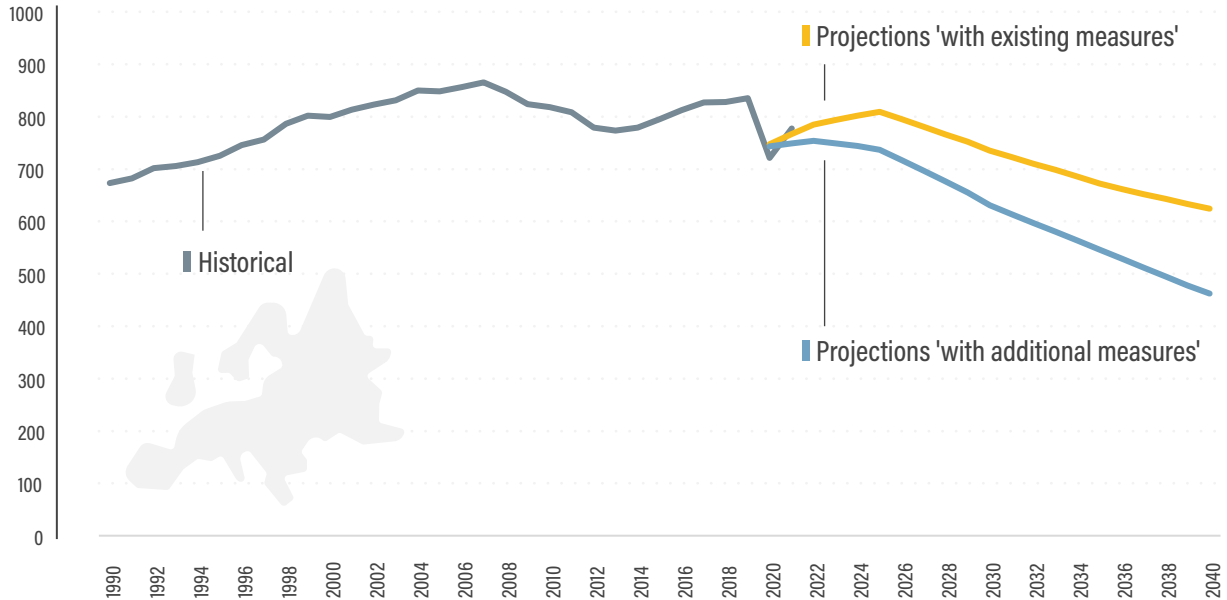




**FIGURE 2.**

## Greenhouse gas emissions from transport in the EU, 1990-2020, with projections to 2040

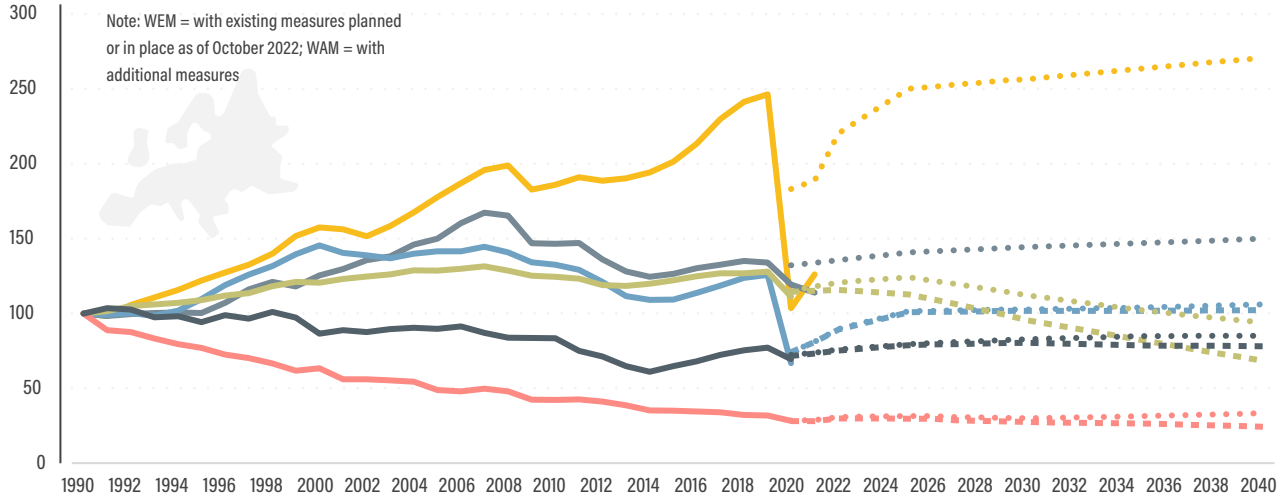
Source: See endnote 80 for this section.



Note: "With existing measures" includes those planned or in place as of October 2022.

**FIGURE 3.****Change in greenhouse gas emission levels from transport in the EU, by mode, 1990-2020, with projections to 2040**

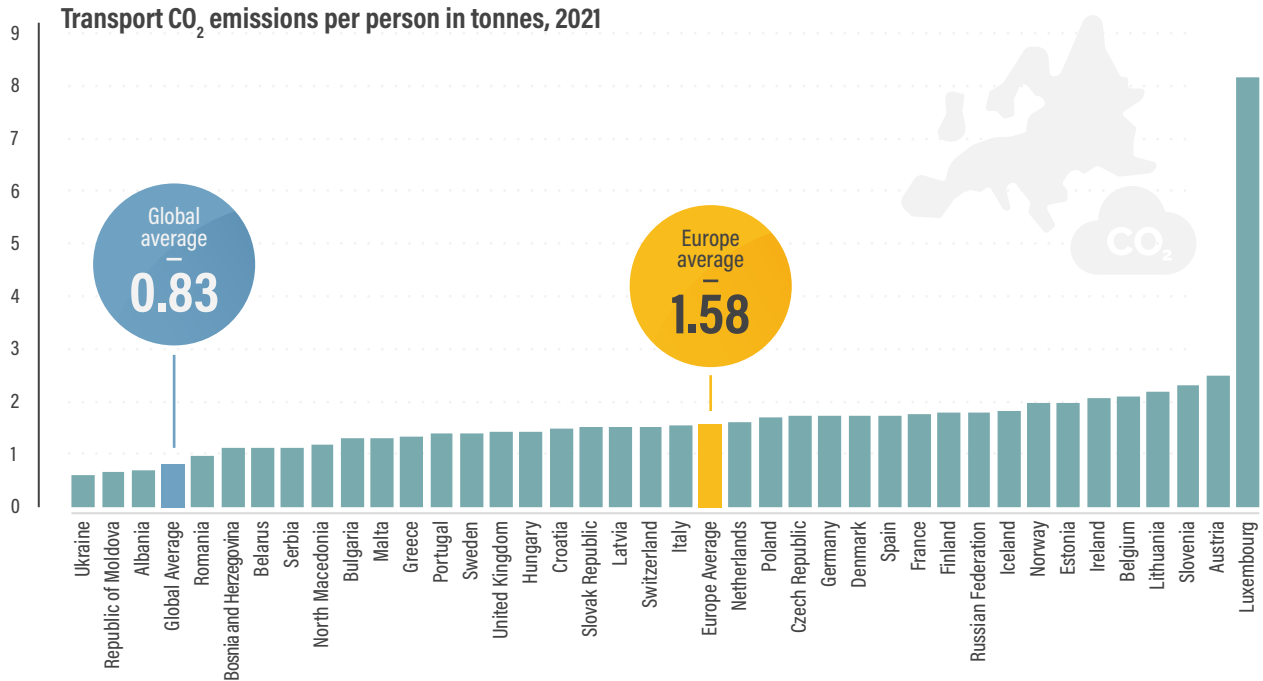
Source: See endnote 82 for this section.

**EU-27 projections:**

- International aviation
- International maritime transport
- Domestic Aviation
- Road transport
- Railways
- Domestic navigation
- ⋯ WEM international aviation
- ⋯ WEM international maritime transport
- ⋯ WEM domestic aviation
- ⋯ WEM road transport
- ⋯ WEM railways
- ⋯ WEM domestic navigation
- - - WAM international aviation
- - - WAM international maritime transport
- - - WAM domestic aviation
- - - WAM road transport
- - - WAM railways
- - - WAM domestic navigation

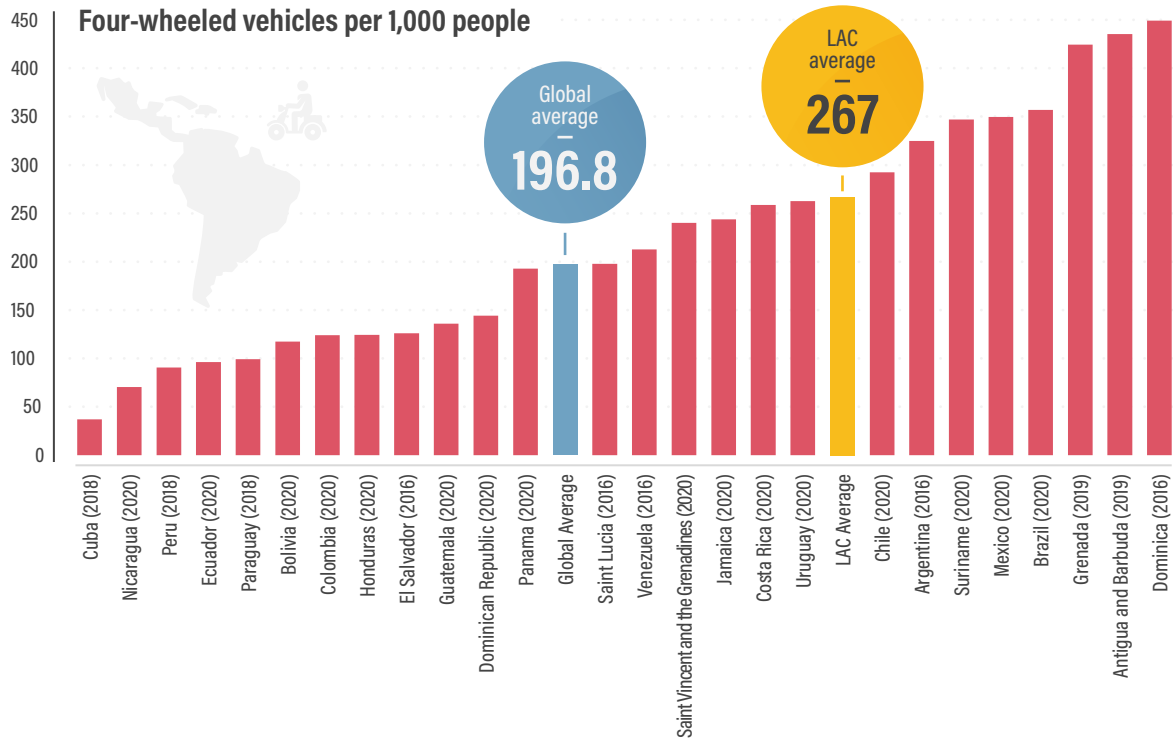
**FIGURE 4.** Per capita transport CO<sub>2</sub> emissions in Europe, by country, 2021

Source: See endnote 85 for this section.



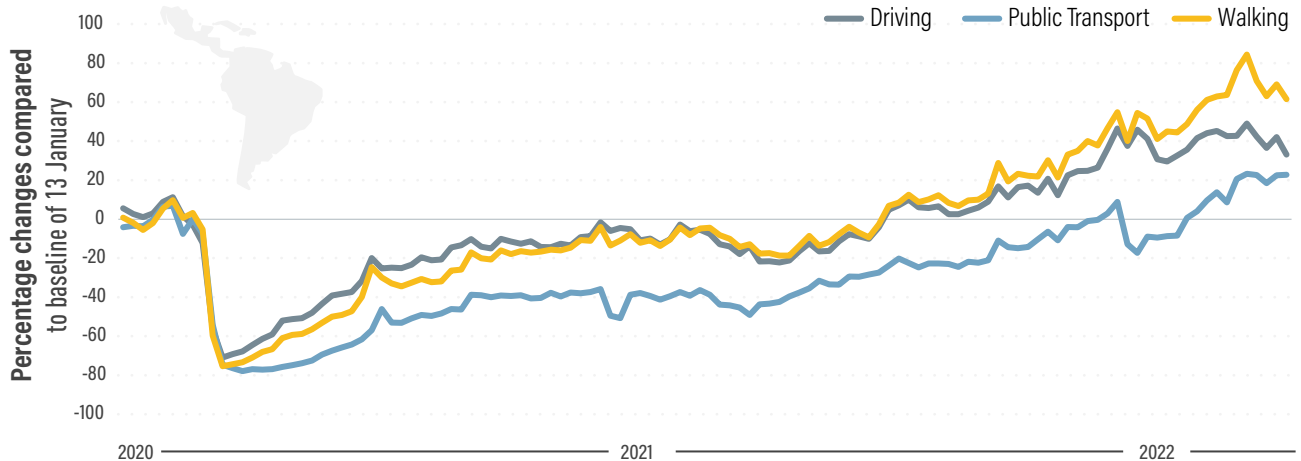
**FIGURE 1.****Motorisation rates per 1,000 people in Latin America and the Caribbean, 2016-2020**

Source: See endnote 9 for this section.



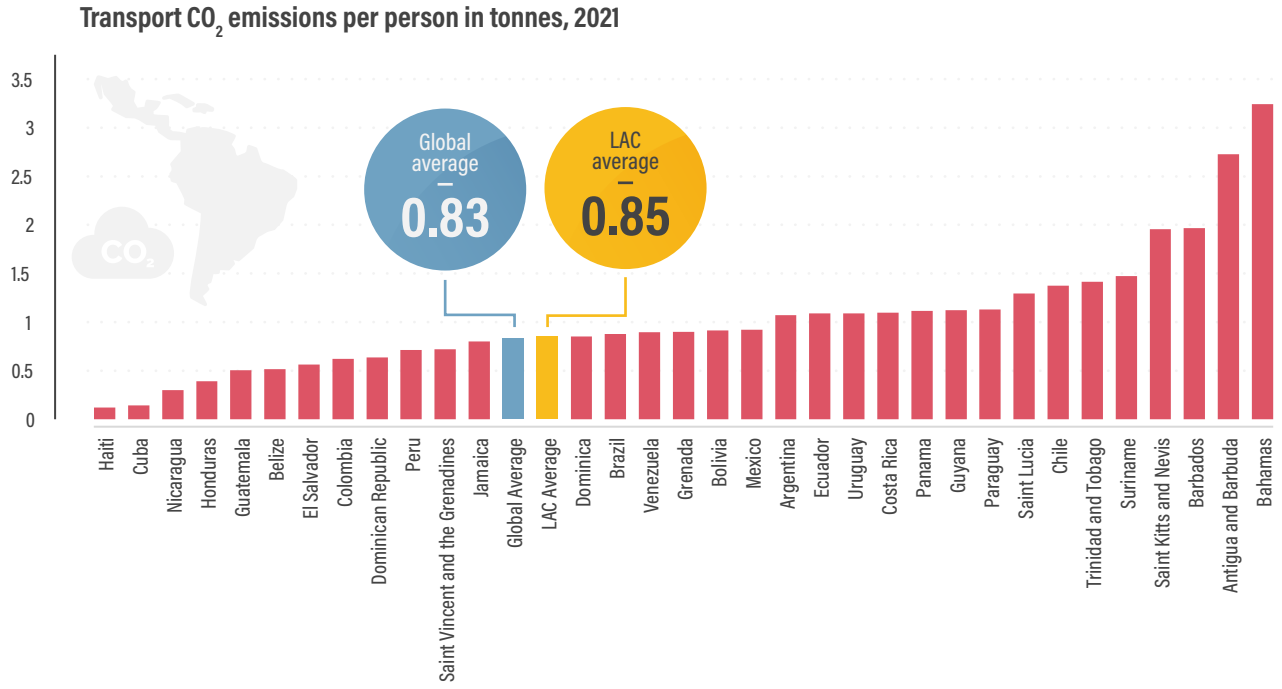
**FIGURE 2.** Navigation requests for driving, public transport and walking in Latin America, January 2020 to April 2022

Source: See endnote 23 for this section.



**FIGURE 3.** Per capita transport CO<sub>2</sub> emissions in Latin America and the Caribbean, 2021

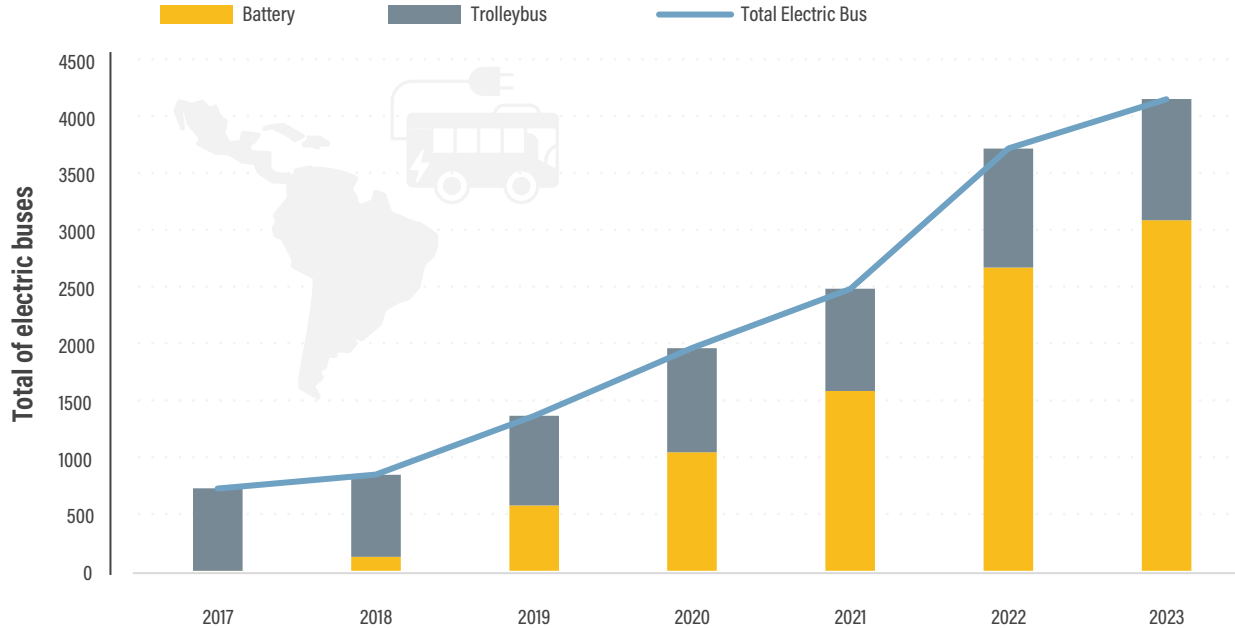
Source: See endnote 68 for this section.



**FIGURE 4.**

**Electric buses in Latin America and the Caribbean, by type, 2017-2023**

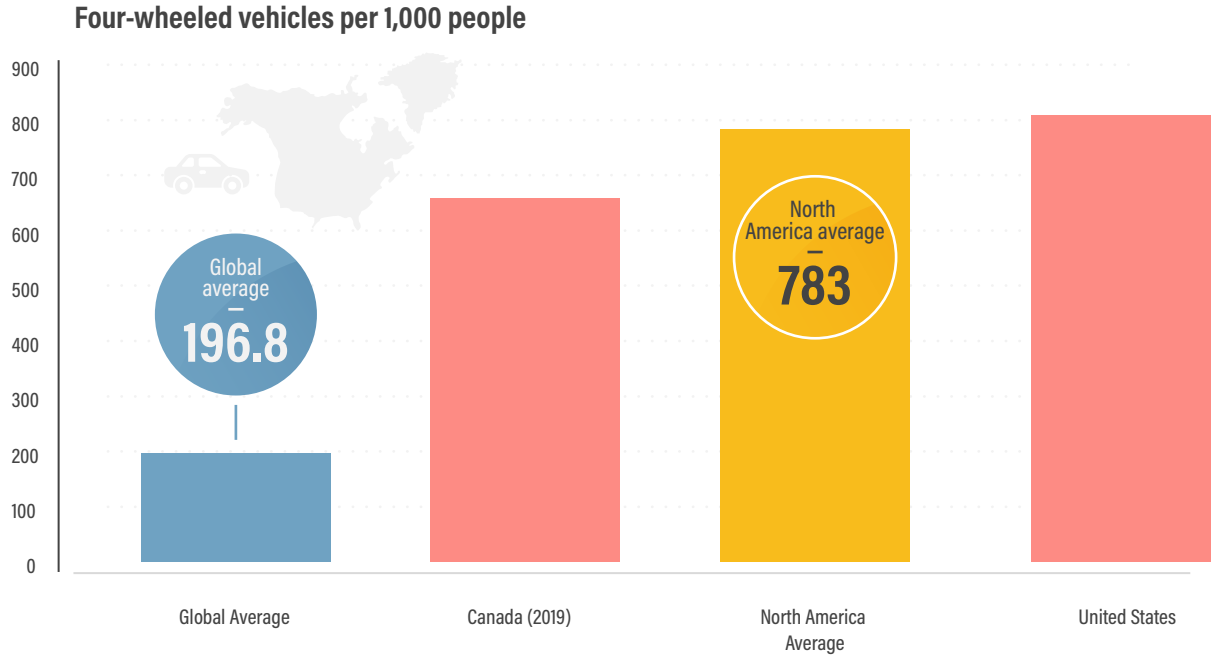
Source: See endnote 90 for this section.



**FIGURE 1.**

**Motorisation rates per 1,000 people in North America, 2019/2020**

Source: See endnote 18 for this section.



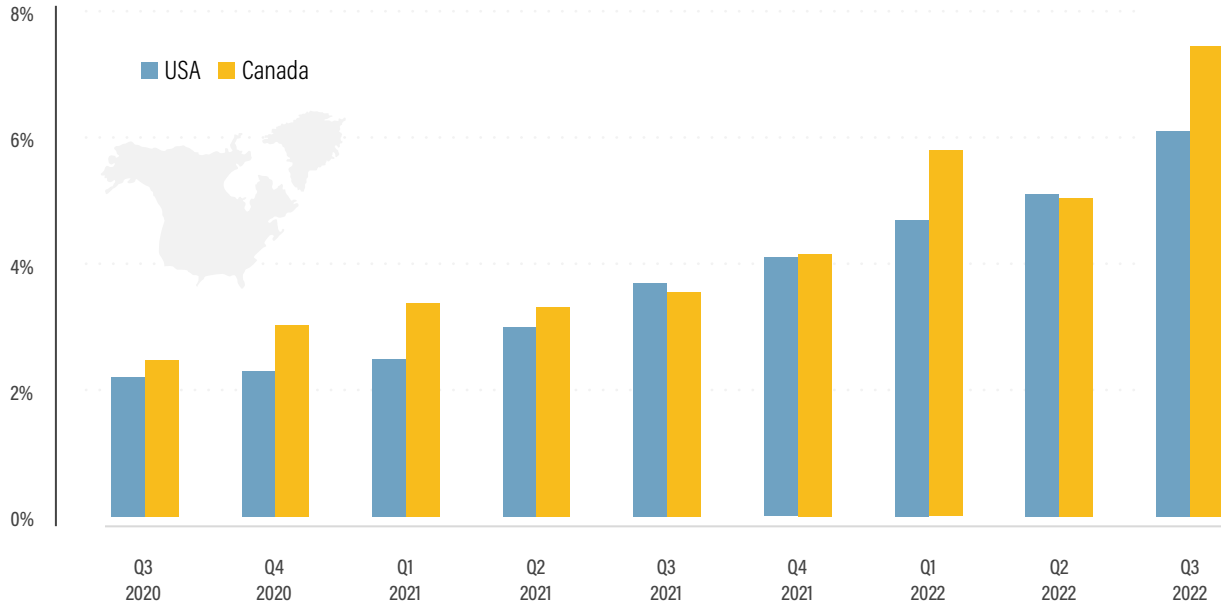


**FIGURE 2.**

**Shares of battery electric vehicles sold in Canada and the United States, 2020-2022**

Source: See endnote 20 for this section.

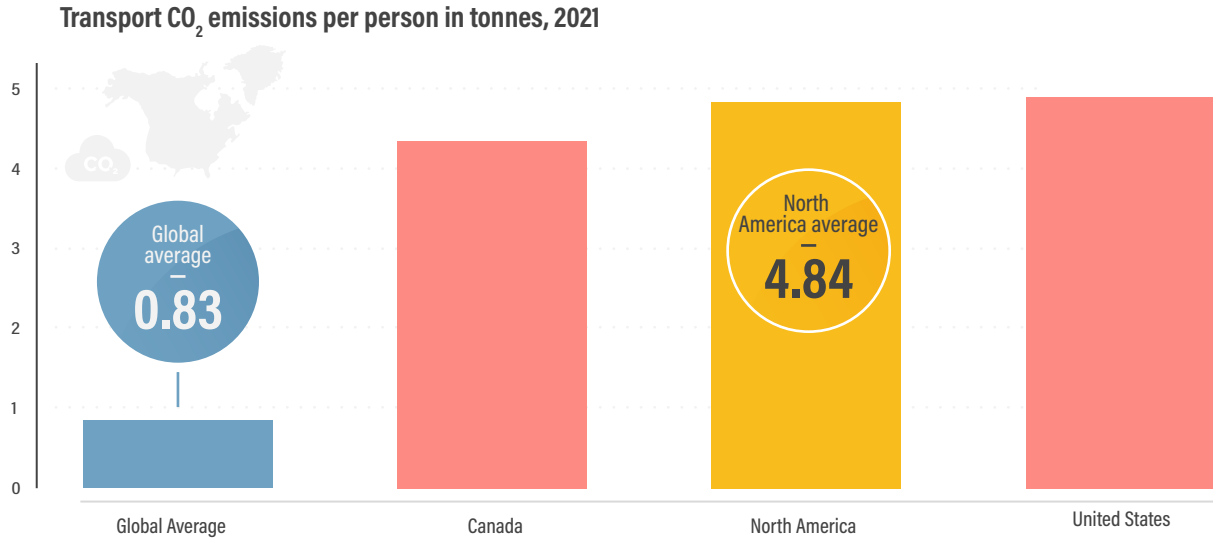
### Sales share of battery electric vehicles



**FIGURE 3.**

**Per capita transport CO<sub>2</sub> emissions in North America, 2021**

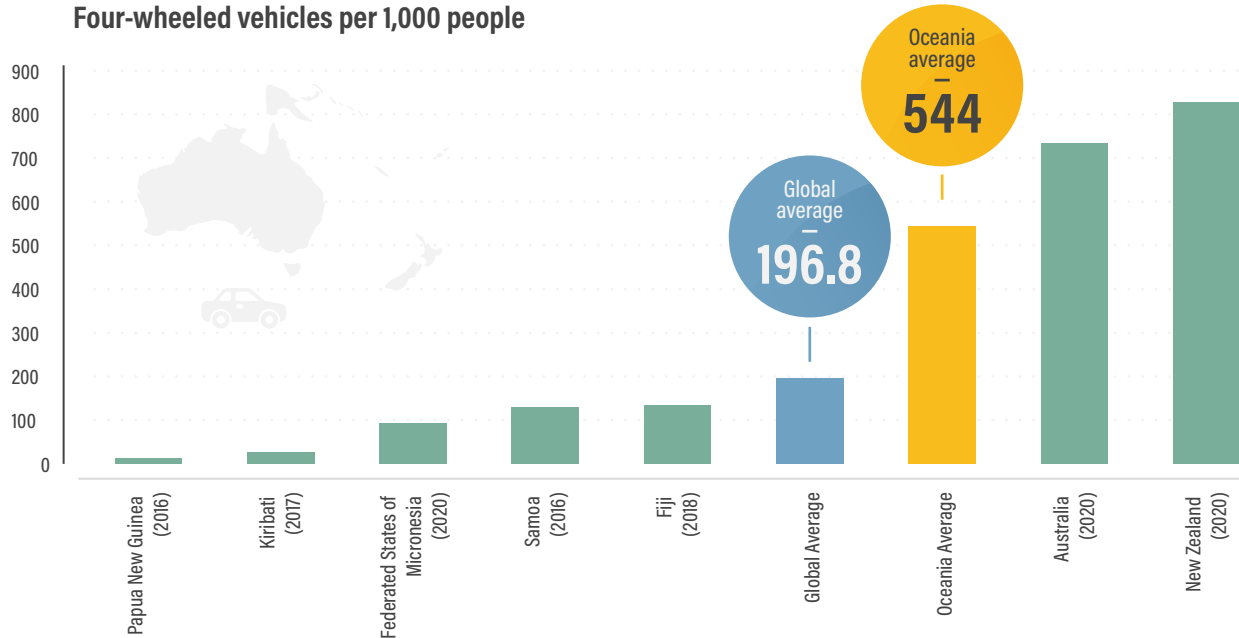
Source: See endnote 51 for this section.



**FIGURE 1.**

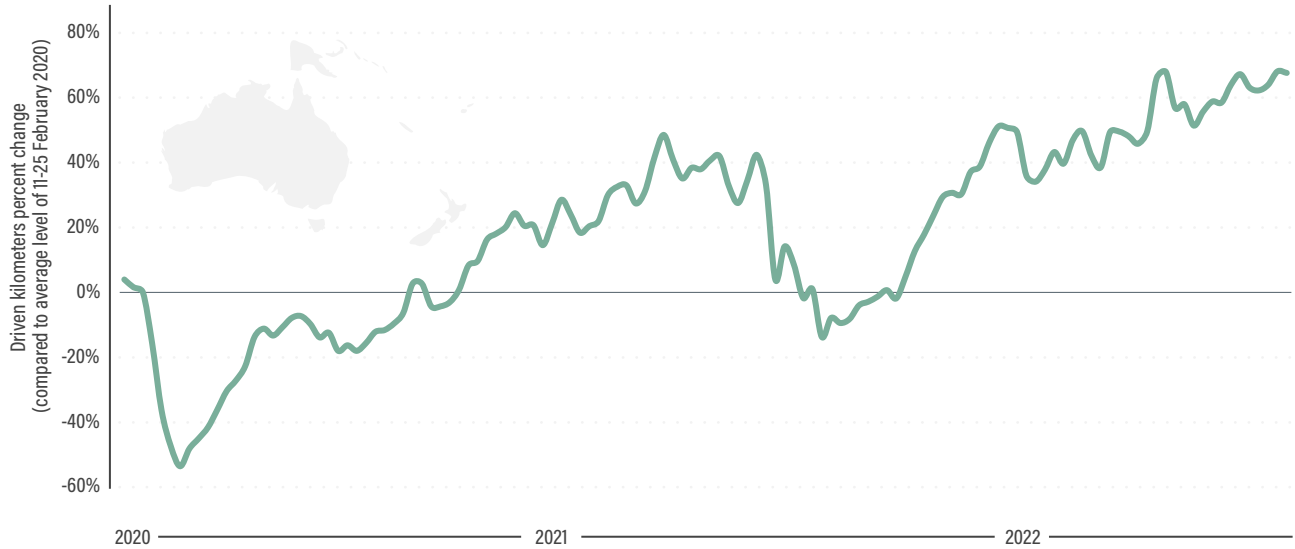
**Motorisation rates per 1,000 people in Oceania, 2016-2020**

Source: See endnote 16 for this section.



**FIGURE 2.** Changes in kilometres driven in Oceania, 2020-2022

Source: See endnote 34 for this section.



**FIGURE 3.**

### Per capita transport CO<sub>2</sub> emissions in Oceania, 2021

Source: See endnote 49 for this section.

