

Algeria



TRANSPORT, CLIMATE
AND SUSTAINABILITY
GLOBAL STATUS REPORT



Algeria recorded an 8.9% decrease in transport CO₂ emissions between 2015 and 2021 due to the impacts of the COVID-19 pandemic in 2020 and 2021. However, transport is the largest CO₂ producing sector in the country as of 2021. The country's per capita CO₂ emissions in 2021 were 0.92, a reduction from 1.12 in 2019, but still significantly higher than the regional average for Africa of 0.25 ton CO₂.

National efforts to reduce transport emissions focus on the expansion of urban and intercity rail, rail electrification and service improvements. Algeria however lacks policies to improve walking and cycling and vehicle electrification is still missing despite a good environment to regulate used vehicles.

Income group	Middle-income
Human Development Index (2021)	0.745
Population size (2022)	44 543 592 +13.8% (2015 - 2022)
Urban population share (2022)	74.8% +18% (2015 - 2022)
GDP per capita (2021)	3 985.50 -6% (2015 - 2021)

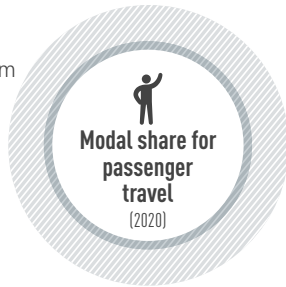
Transport Demand Trends

Passenger travel activity

3 900

million passenger-km for rail in 2020

-19.8%
(2015 to 2020)

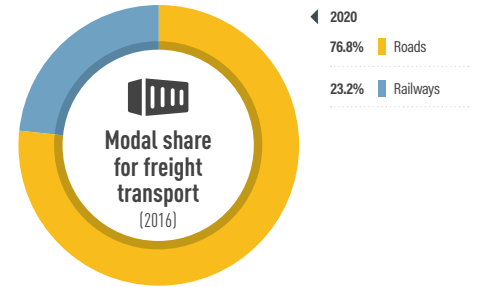


Freight transport activity

3 552

million ton-km for roads and rail in 2020

-1.1%
(2015 to 2016)



Energy consumption (2020)

13.7

million tonnes of oil equivalent

-12%
(2015 to 2020)

Average light duty fuel economy consumption Lge/100 km (WLTP) **(n/a)**

95.4%
Oil Products

3.6%
Natural Gas

1%
Electricity

Transport Emission Trends

Transport CO₂ emissions (2021)

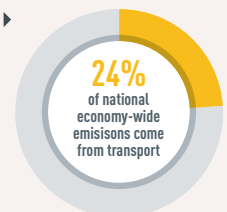
42.3 million tonnes

-8.9%
(2015 to 2021)

Per capita transport CO₂ emissions (2021)

0.96 tonnes

Transport is the largest CO₂ producing sector in the country



Per capita transport CO₂ emissions



Transport Decarbonisation Pathways

Transport strategy identifies climate change	<input checked="" type="checkbox"/>
Long-term strategy submitted to UNFCCC	<input checked="" type="checkbox"/>
NDC submitted:	Only 1st NDC in 2016
NDC highlights transport for GHG mitigation	<input checked="" type="checkbox"/>
Transport mitigation targets in NDC	<input checked="" type="checkbox"/>
Other non-emission related transport targets in NDC	<input checked="" type="checkbox"/>
VNR highlights transport	<input checked="" type="checkbox"/> 2019 VNR with transport linkages to SDG 1, SDG 7, SDG 11 and SDG 13.

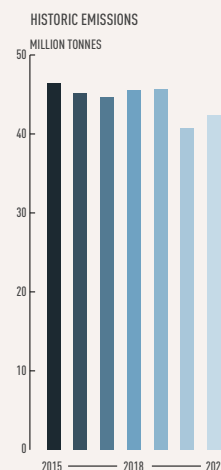
Transport actions in VNRs

- Infrastructure development
- CNG
- Efficiency improvements
- Public transport and cycling promotion

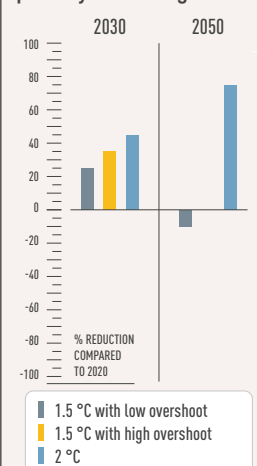
Transport actions in NDC

- Mitigation: LPG/CNG/LNG
- Adaptation: Transport laws, regulations and programmes

Required regional transport decarbonisation pathways



IPCC transport decarbonisation pathways for this region



Policy Areas: Indicators and Targets

Integrated Transport Planning

National urban mobility framework (2022)	Not available
Sustainable urban mobility plans (2022)	Not available
Number of sustainable urban mobility plans (2022)	✘
Low emission zones (2022)	✘

Walking

National walking strategies (2022)	Not available
------------------------------------	---------------

Cycling

National walking strategies (2022)	Not available
Cycling infrastructure in capital (2022)	Not available

Shared Mobility, Public Transport and Informal Transport

Bus rapid transit (2022)	✘
Bus rapid transit daily passenger volume (2022)	
Urban rail (LRT, metro, tram) (2022)	116km in 7 cities
Rapid Transit to Resident Ratio (2021)	15.9

Intercity Rail

Rail network (2021)	4000.5 km
Rail travel activity (2019)	348 million-passenger-km
Rail freight activity (2019)	908 million ton-km
High-speed rail (2021)	Not available
High-speed rail travel activity (2021)	Not available
National plans for passenger and freight rail expansion (2022)	📌

Target

- ▶ To develop high-speed rail and electrify railways
- ▶ Double passenger volume by 2025

Road Transport

Total road vehicles in use per 1,000 people (2020)	143.6
Average annual growth rate (from 2015 to 2020)	3%

Aviation

Air passengers carried (2020)	1.5 million people
Air freight activity (2020):	15.6 million ton-km
Carbon-accredited airports (2022)	✘
of which carbon neutral:	✘

Shipping

Liner shipping connectivity index (2021):	12.2
Container port traffic (2020):	724991 TEU

Transport Energy Sources

Biofuel blend mandate (2022)	Not available
Renewable energy (biofuels and electricity) share in transport (2020)	1.02%
Targeted % of renewable energy	Not available

Vehicle Technologies

Emission standards for LDVs (2020)	Euro 6
CO ₂ emissions performance for passenger cars (2018)	Not available
Targeted CO ₂ emissions performance	Not available
Regulatory environment ranking on used vehicles by UNEP (2021)	Very good
Electric vehicles (2022)	Not available
Share of electric vehicles in car sales (2022)	Not available
ICE phase-out targets:	✘

COVID-19

Strongest impact of COVID-19 on...	(compared to pre-COVID-19 baseline)
... trips to public transport	Not available
... navigation request for walking	Not available
... navigation request for driving	Not available
... driven kilometres	Not available
Traditional transport infrastructure investment:	Not available
Clean transport infrastructure investment:	Not available

Data in this fact sheet is based on the Energy and Transport Starter Data Kits by the Climate Compatible Growth (CCG) programme. SLOCAT is contributing transport data to the Energy and Transport Starter Data Kits; synthesising available data on passenger and freight activity, energy intensity, load factors and vehicle fleets for Africa, Asia and Latin America. For more information, please visit climatecompatiblegrowth.com/starter-kits/.

This fact sheet is part of the SLOCAT Transport, Climate and Sustainability Global Status Report 3rd Edition. Information shown in this country fact sheet is based on desk research and might not be complete or not show the most recent status. The data has been collected to the best knowledge and availability. If no information was able to be retrieved, then 'Not available' is being indicated. The content does not represent the opinion of the SLOCAT Partnership on Sustainable, Low Carbon Transport. For more information, please visit tcc-gsr.com

List of acronyms

GDP	Gross-domestic product
HDV	Heavy-duty vehicle
ICE	Internal combustion engine
LDV	Light-duty vehicle
LRT	Light-rail transit
NDC	Nationally determined contribution
TEU	Twenty-foot Equivalent Unit
UNEP	United Nations Environment Programme
UNFCCC	United Nations Framework Convention on Climate Change
VNR	Voluntary national review of the Sustainable Development Goals
WLTP	Worldwide harmonised light vehicles test procedure